

To **Apply** or not to **Apply**

Question:

I notice when people make a change in an option box (*example at right*) they often click **Apply** and **OK** when exiting. Is it necessary to click both?

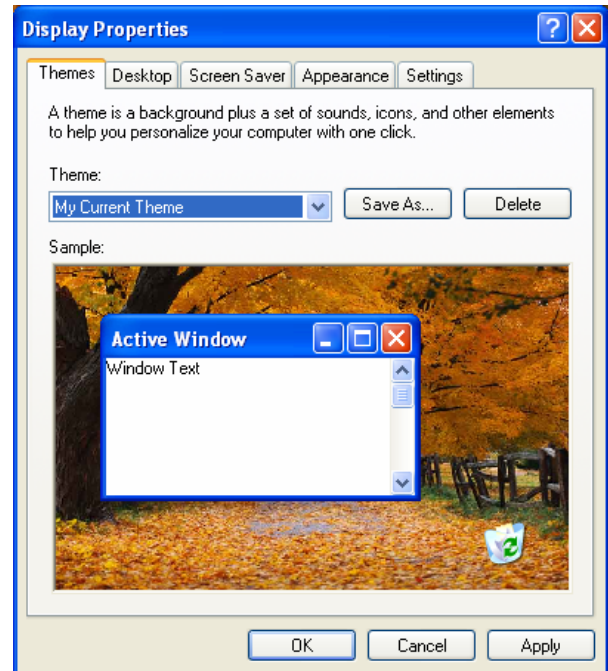
Answer:

No, it is not necessary to select both options.

The **Apply** option is used to apply the change but stay in the current selection window.

The **OK** option accepts all changes (applies them) and then exits the current window.

So in a nutshell . . . click Apply to see what you changed, but might want to stay to make other changes, but if you want to just save the change and exit just click OK and all changes are applied.



Dawn V. Wooten

Sr. *System Applications Analyst, MOUS Master*
Corpus Christi, TX, USA